



because your bed is for so much more than sleeping...

At Kumi kookoon, only the very finest silk is used for both fabric and silk-filling. Our silk comes from unbroken, undisturbed cocoons of 100% mulberry-leaf-fed silkworms. All products are made to the most stringent of standards so that you will be thoroughly satisfied with the end result.

why silk?

allergen-free

- 100% naturally hypoallergenic
- inhospitable to dustmites
- purer alternative to down and other allergen-harboring insulates

low moisture retention

- resists mildew from forming
- wicks moisture away from the body
- may provide relief from arthritis and joint pain

temperate and comfortable

- adjusts to the environmental temperatures
- acts warmer in the winter and cooler in the summer
- withstands deterioration and will not break down over time
- fibers will not wander or bunch, creating a more even warmth

essential amino acids

- composed of 18 essential amino acids
- studies have indicated the pervasive benefits of amino acids exposure in counteracting the effects of aging, especially in facial skin
- amino acids function to help calm the

product care and cleaning

For everyday freshness, silk-filled bedding can be aired outside in indirect sunlight. The sun will encourage the silk to release any impurities that may be trapped inside the fibers, and the fresh air allows the silk to breathe. For cleaning, **charmeuse** garments or bedding should be taken to a **professional dry cleaner**. **Never launder (wet clean) silk-filled comforters, blankets, throws or pillows.**



organza collection
flower collection pillow sham





baby petite cashmere throw

6



lattice cashmere throw







classic collection throw

velvet collection
quilted collection





french pleat collection



butterfly collection



chic collection



velvet travel set



classic bedding

basics



thousands of hand-strung, grade A, mulberry silk fibers make our comforters and pillows the industry standard. there is no comparison. this construction creates a lightweight drape and uniform warmth, characteristic of all kumi kookoon products



classic collection

▶ this exquisite silk charmeuse collection adds luxury to any room. our "classic" throw has five rows of stitching around the perimeter and six buttons in the center to anchor the hand-stretched silk filling.

quilted collection

▶ a diamond quilting pattern is used on this collection's 100% silk charmeuse cover, a mixed backing of 55% silk, 45% cotton with poly-fill batting.



velvet collection

▶ plush silk-velvet is trimmed with our sleek silk charmeuse for an elegant blend of contrasting textures. throw and duvet cover have velvet on one side, charmeuse on the

french pleat collection

▶ exquisite pin-tucked detailing creates a delicate effect on this bedding collection. throw (not shown) comes with pearl or button accents, please specify preference.



organza collection

▶ silk organza trims the edges of the pillow shams and duvet cover for a beautiful finishing touch on this collection.



ming collection

▶ the ming collection is designed with a contrasting color border. the pillow shams, duvet covers and throws of this collection will add elegance to any bedroom.

chic collection

▶ woven silk charmeuse, accented with swarovski crystals.



butterfly collection

▶ beautifully embroidered butterflies are scattered on this collection's pillows, throws and loungewear. standard, king and european pillow covers are book-ended and sold as a set.



dream collection

▶ enjoy these silk-filled blankets any time of the year



cashmere collection

▶ our signature silk charmeuse is combined with the finest cashmere to create these luxurious throws. cashmere available in three styles: classic, petite & lattice.



| | classic | butterfly | chic | flower | french pleat | ming | organza | quilted | velvet |
|---------------------------------------|---------|-----------|------|--------|--------------|------|---------|---------|--------|
| pillow covers/shams | | | | | | | | | |
| petite | | | x | | | | | | |
| neckroll | x | | | | | x | | x | x |
| boudoir | x | x | x | x | x | x | x | x | x |
| throw | | | x | x | | x | | | |
| standard | x | x # | | | x | x | x | x | x |
| queen | x | x # | | | x | | x | x | x |
| king | x | x # | | | x | x | x | x | x |
| european | x | x # | | x | x | x | x | x | x |
| | | | | | | | | | |
| fitted sheet | | | | | | | | | |
| baby, twin, full | x | | | | | | | | |
| queen, king, cal king | x | | | | | | | | |
| | | | | | | | | | |
| flat sheet | | | | | | | | | |
| twin, full | x | | | | | | | | |
| queen, king, cal king | x | | | | | | | | |
| | | | | | | | | | |
| duvet cover | | | | | | | | | |
| twin, full | x | ++ | | | ++ | ++ | ++ | | ++ |
| queen, king, cal king | x | x | | | x | x | x | | x |
| | | | | | | | | | |
| blanket/coverlet | | | | | | | | | |
| standard, queen, king | x | x | | x | x | x | | x | x |
| | | | | | | | | | |
| bedskirt (with or w/o decking) | x | | | | | | | | |
| | | | | | | | | | |

+ + other sizes available upon request

sold as a set

available in the following color combinations:



feather with contrasting color



tone-on-tone

-  H-01 feather
-  H-02 crème
-  H-04 powder puff
-  H-07 pussy willow grey
-  H-08 storm
-  H-09 lavender
-  H-10 plum
-  H-11 sky blue
-  H-13 navy
-  H-17 chestnut
-  H-19 caviar

sheet sets

| |
|--------------|
| twin set* |
| queen set |
| king set |
| cal king set |

set includes:
1 flat sheet

1 fitted sheet (15" pocket)

2 pillow cases (1 pillow case for twin set)

duvet covers

| |
|-------------|
| twin duvet |
| queen duvet |
| king duvet |

pillow shams and cases

| |
|----------------|
| boudoir sham |
| queen case set |
| king case set |

- **seamless** silk sheets
- 15 mm habotai silk
- **machine washable**
 - 100% naturally hypoallergenic
- composed of 18 essential amino acids, which are beneficial to skin and hair
- inhospitable to dustmites and other allergens
- silk is naturally temperate, meaning year-round comfort

classic loungewear





laurel



butterfly kimono



michelle



amanda



paris nightshirt



penelope



morgan

classic pant



paris robe

baby collection





silk-filled eyemask



silk slippers



silk-terry robe



silk-terry towels



diedre bag



bedskirt

classic loungewear

ashley pj set

LWPT-03

classic silk pajama set with long sleeve top and long drawstring pant. covered buttons.

CH-03, CH-04, DE-01, DE-02, J-03, J-07, J-09, J-10, J-13, J-16, J-17, J-18, J-19



kumi robe long

LWR-01

classic reversible charmeuse robe.

CH-01/J-19, CH-02/J-19, CH-03/J-16, CH-4/J-19, DE-01/J-13, DE-02/J-13, J-03/J-09, J-03/J-10, J-05/J-09, J-08/J-13, J-09/J-13, J-10/J-09, J-16/J-17, J-19/J-13



laurel

LWD-02

mid-length charmeuse gown. adjustable straps.

CH-01, CH-02, CH-03, CH-04, J-03, J-05, J-07, J-09, J-10, J-12, J-13, J-14, J-15, J-16, J-17



ashley nightshirt

LWPT-04

a variation on our classic pj set. available with matching or contrasting piping.



paris nightshirt

B06-09

long sleeve charmeuse gown with button front.

CH-03, J-09, J-13, J-16, J-17

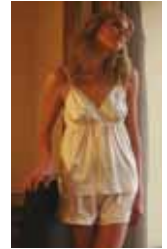


penelope

B08-08

charmeuse cami with chiffon trim and boy shorts.

CH-03, J-03, J-09, J-10, J-13, J-16, J-17, J-19



silk-terry robe

LWR-04

long robe, silk pile loops on cotton ground backing. side pockets. machine wash ok. gentle cycle, cold water. natural color only.



silk-terry towels

fine silk loops are woven into a cotton base.

diedre bag

KC-07

6" x 6" two-tone drawstring bag with beading and sequin flowers.

J-08/J-15, J-09/J-03, J-03/J-09, J-11/J-05, J-09/J-13, J-07/J-01, J-16/J-17



eyemask

EYE-TIE
EYE-ELASTIC

silk-filled, charmeuse cover. elastic or tie straps. available in all colors.



◀ **butterfly kimono**

LWR-03
short kimono-style
charmeuse robe with
embroidered butterflies
on front and back.
J-07, J-09, J-13, J-18, J-19



▶ **kumi robe short**

LWR-02
classic reversible
charmeuse robe.
DE-01/J-13, DE-02/J-13,
CH-01/J-19, CH-02/J-19,
CH-03/J-16, CH-04/J-19,
J-03/J-09, J-03/J-10

michelle

LWD-B07-8S (short)
AWB07-08L (long)
charmeuse gown with
pin-tuck midriff long and
short (shown) versions.
DE-01, DE-02, CH-03, J-03,
J-09, J-13, J-16, J-17, J-19



▶ **amanda**

LWD-05
long charmeuse gown.
bodice center stitched with
three covered buttons.
CH-03, CH-04, J-03, J-05,
J-07, J-09, J-10, J-12, J-13,
J-14, J-15, J-16, J-17

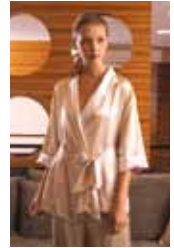


◀ **paris robe**

PAR-RBE L (long)
PAR-RBE S (short)
charmeuse robe with
chiffon trim. short (shown)
and long versions.
CH-03, J-03, J-09, J-10,
J-13, J-16, J-17, J-19

morgan

LWJ-B07-6A
charmeuse bed jacket
with wrap closure.
J-09, J-10, J-13



classic pant

LWP-B07-6B
charmeuse lounge
pant with elastic/
drawstring waist.



◀ **bedskirt**

Available with or
without decking

baby

◀ pure and natural, this
supersoft collection will
keep your baby com-
fortable and happy.



silk slippers

SS-01
charmeuse uppers, suede
sole. travel bag included.
available in select colors.
sm (5-6)
md (7-8)
lg (9-10)
xlg (11-12) j-03, j-09, j-15 only

